

Introduction



dtidata.com[®]

Copyright © 2004 dtidata.com



Welcome to the DTI RetroBurner program.

This program is designed to help you retrieve the lost files from CDs and DVDs that windows cannot locate. DTI RetroBurner will recover your important documents, image files, or even your audio files.

Want to dive right in? [Getting Started](#)

Want to do it for real? then.. [Register](#)

Do you have what it takes? [System Requirements](#)

Installation

System Requirements

To run this application you will need the following:

Pentium Processor equivalent or better in your computer

64MB or more of RAM Memory

A CD or DVD Drive

Install Process

You will have gone through the installation process when you downloaded and installed the first time.

If you want to register now, then see the details [here](#).

How to Register

To register your DTI RetroBurner program, please contact our sales department via Email on sales@dtidata.com or visit the DTI Data Recovery website www.dtidata.com.

Alternatively, you can contact our Sales Department by phone:

USA toll free: 1-866-438-6932

International: 1-727-345-9665

User Assistance

If you are having any problems with our program please ensure that your software is up do date by using the [Live Update](#) feature.

If the problem persists or you need help please contact us.

Contact our well trained technical support personnel support@dtidata.com or call us toll free 24/7 within continental USA at 1-866-438-6932 or International 1-727-345-9665.

If your CD-DVD data can not be recovered by DTI RetroBurner we recommend sending your data to dtidata.com for in-house data recovery. We have done an analysis of the market place including: price, turn around time, customer service and results. We have found dtidata.com to be the most competent in this area. You can also visit our website for all your other data recovery needs www.dtidata.com or e-mail our Sales staff sales@dtidata.com

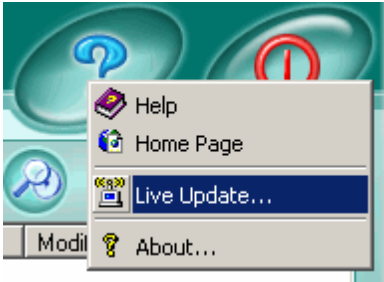
For all other questions, concerns or comments, click here info@dtidata.com.

[Frequently Asked Questions](#)

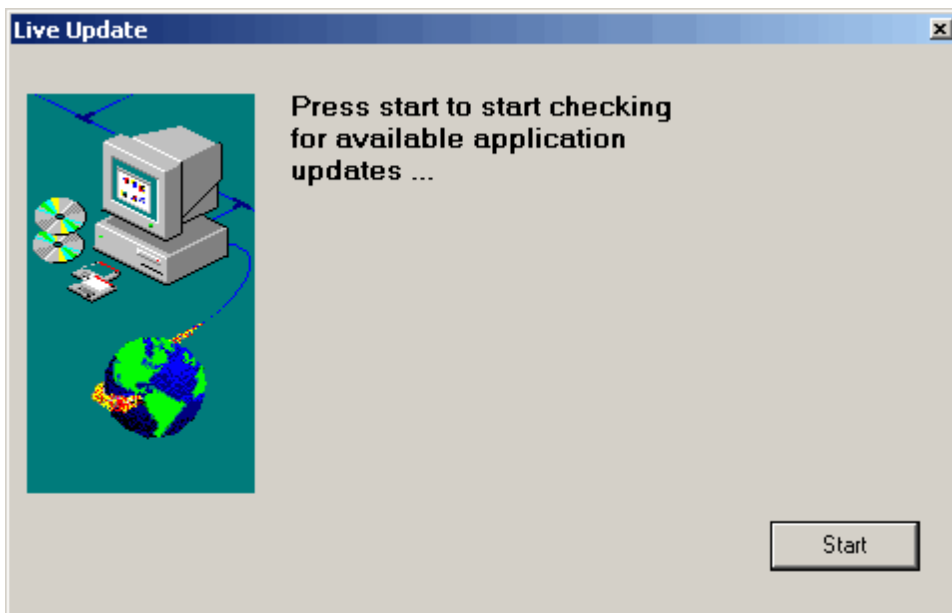
Updating Your Software

RetroBurner has an "live update" feature that allows you to keep your version updated with the latest technology and features using the internet.

The Live Update feature is found in the Help Menu as shown below.



After selecting the Live Update option you will see the following dialog.



Click the START button to check for program updates.

Uninstalling

To remove this program from your system:

Using the Windows Uninstaller

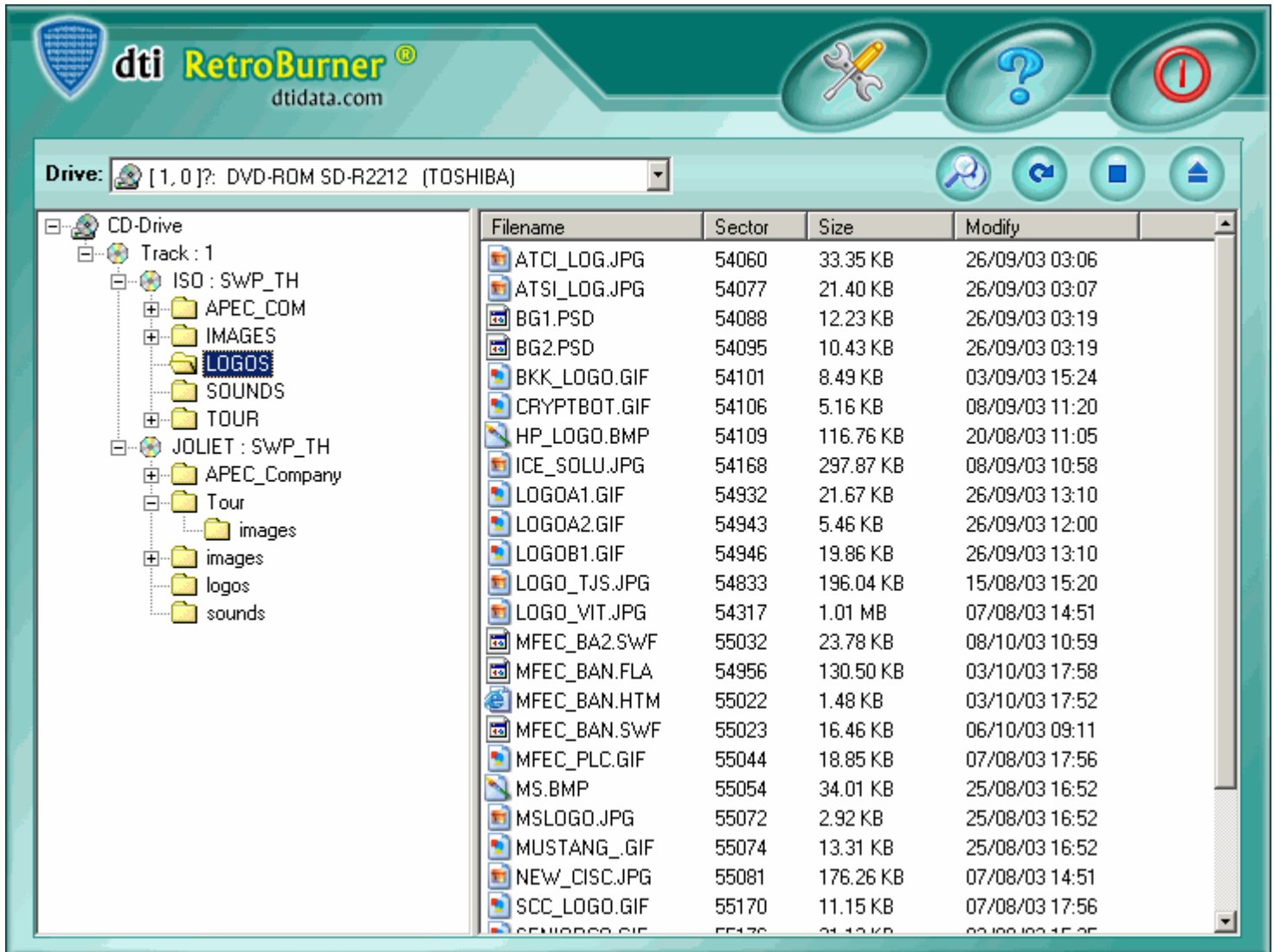
- Open the Windows Control Panel.
- Double-click Add/Remove Programs.
- Find the application name in the list and select it.
- Follow the instructions in the Uninstall Wizard.

Using the Digital Picture Recovery Uninstaller:

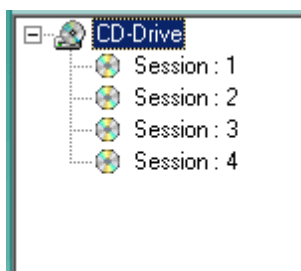
- Open the Start Menu.
- Go to Programs.
- Select the DTI RetroBurner program group.
- Double-Click Uninstall and follow the instructions.

Getting Started

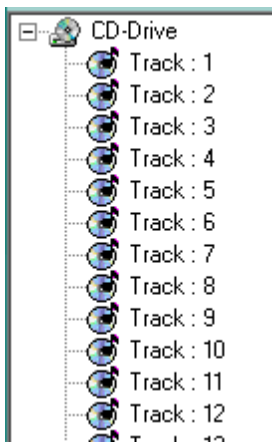
When you start DTI RetroBurner the following screen will be displayed



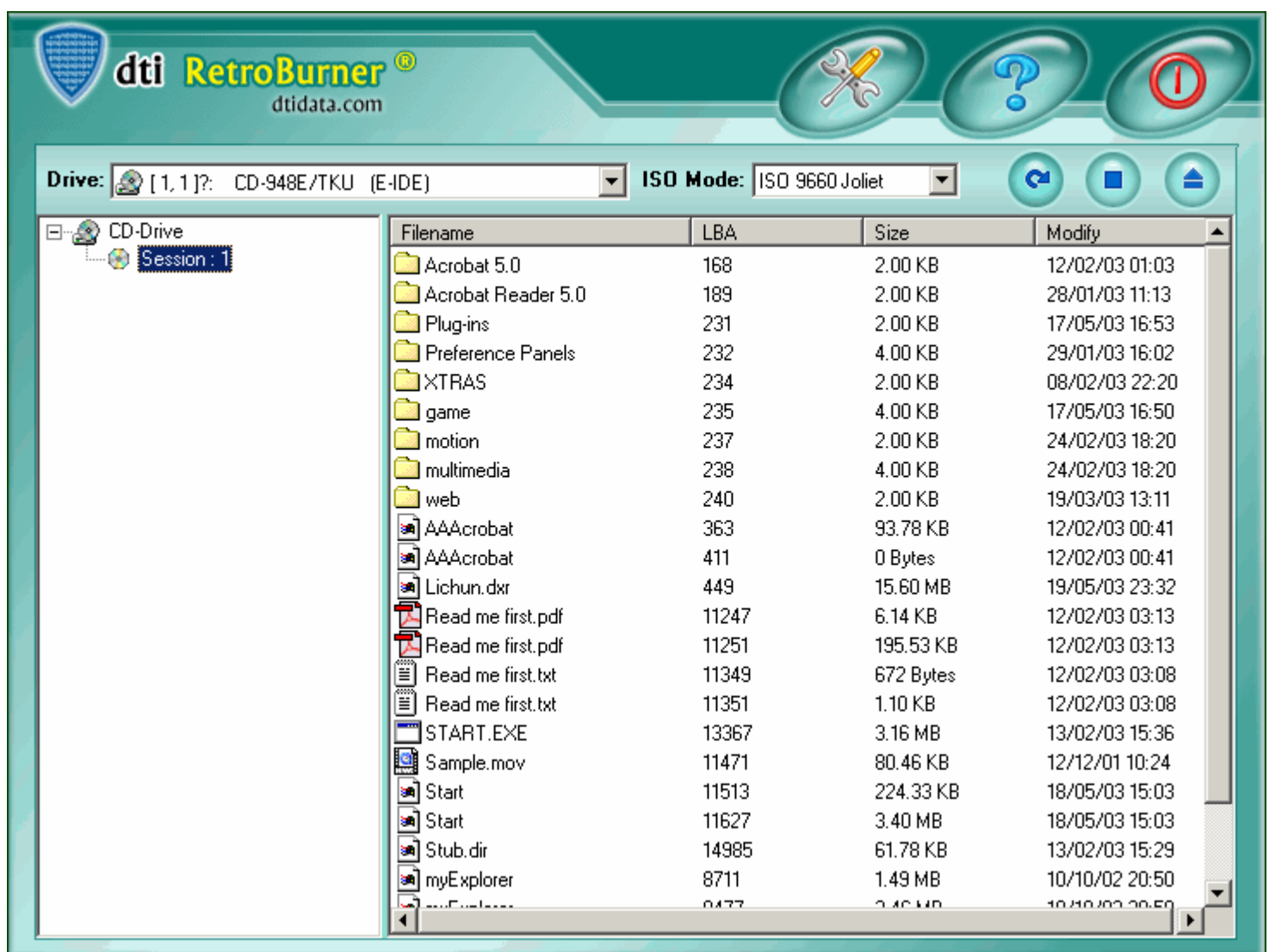
Step 1: Insert your CD-DVD. Where the data you want to recover is located. You will see the session list of your CD/DVD display on the left. There are two layout difference between Data CD/DVDs and Audio CD/DVDs



If you insert an Audio CD, it will display as tracks rather than the image below:



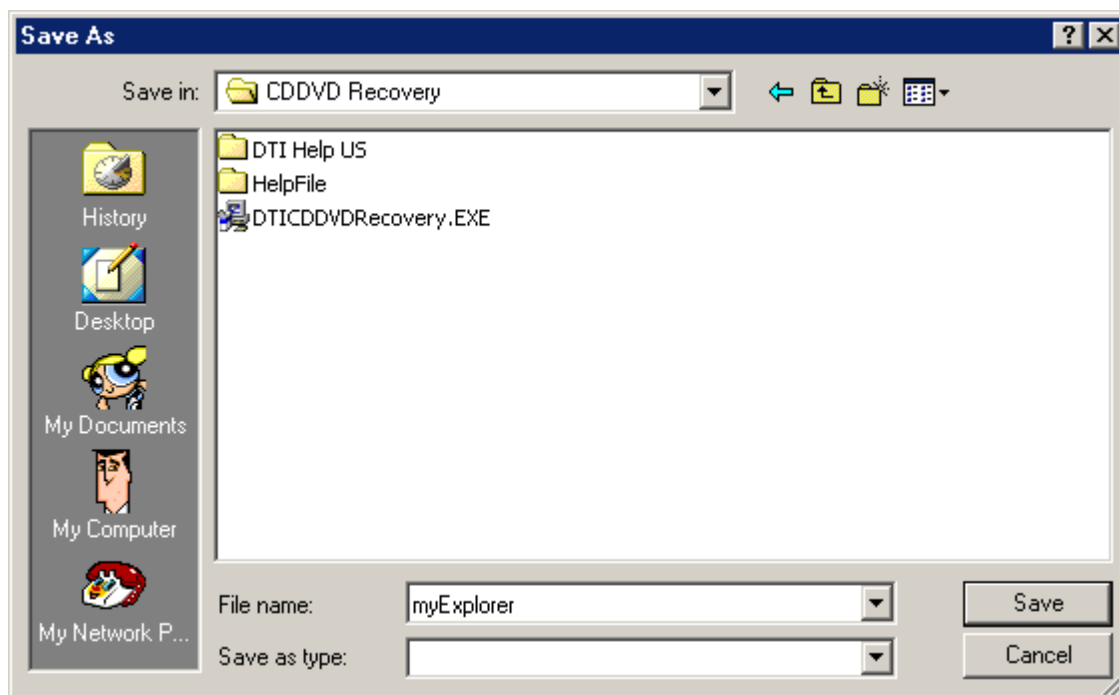
Where you will be able to locate data you want to retrieve. DTI RetroBurner program will show all readable files, on the right hand side of the window.



If you don't see your files listed, click on the refresh button ().

Step 3: Select the file you want to recover. Click the file that you want to recover and then Right Click on that file. You will see popup menu of available options, these include: [File Description](#), [View Hex](#), [Recover](#), and [Extract Data](#)

Choose the "Recover" option from the pop up menu. The Save File dialog appears



Choose the destination you want to save your recovered file. Then, click the Save button to save the file.

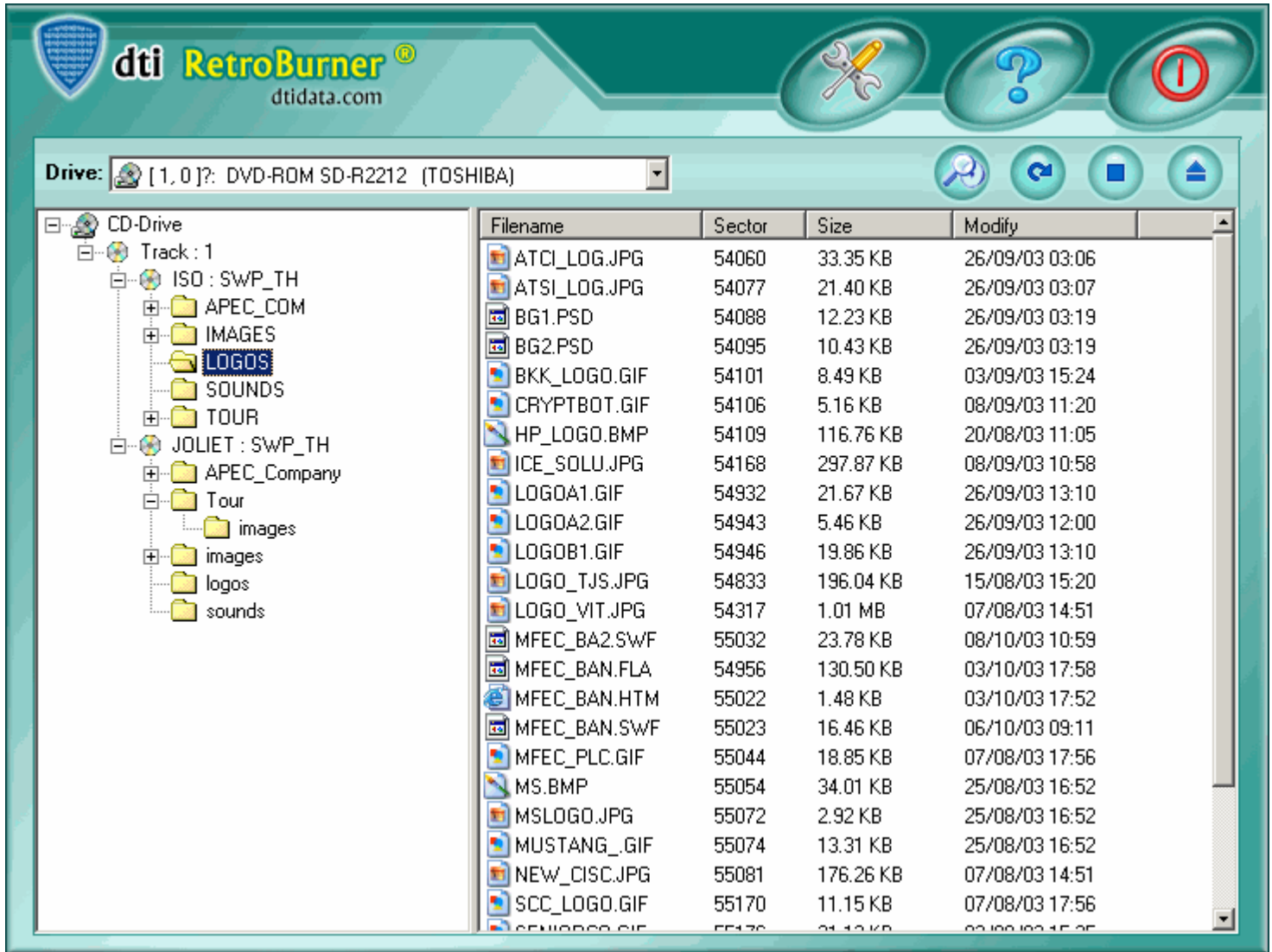
Step 5: If you cannot Recover Your File

Try the [CD Scan](#) option

Program Displays

Depending on the type of disk you are recovering from you will see two different presentations of data:

Data CD/DVDs



The screenshot shows the dti RetroBurner software interface. The top bar features the dti RetroBurner logo and website (dtidata.com) on the left, and three circular icons (wrench and screwdriver, question mark, and stop sign) on the right. Below the top bar, a drive selection dropdown shows "[1, 0]?: DVD-ROM SD-R2212 (TOSHIBA)". To the right of the dropdown are four circular icons: a magnifying glass, a refresh symbol, a square, and an upward arrow. The main window is divided into two panes. The left pane shows a tree view of the CD-ROM structure, including "Track : 1", "ISO : SWP_TH" (with subfolders APEC_COM, IMAGES, LOGOS, SOUNDS, TOUR), and "JOLIET : SWP_TH" (with subfolders APEC_Company, Tour, images, logos, sounds). The right pane displays a table of files with columns for Filename, Sector, Size, and Modify.

Filename	Sector	Size	Modify
ATCI_LOG.JPG	54060	33.35 KB	26/09/03 03:06
ATSI_LOG.JPG	54077	21.40 KB	26/09/03 03:07
BG1.PSD	54088	12.23 KB	26/09/03 03:19
BG2.PSD	54095	10.43 KB	26/09/03 03:19
BKK_LOGO.GIF	54101	8.49 KB	03/09/03 15:24
CRYPTBOT.GIF	54106	5.16 KB	08/09/03 11:20
HP_LOGO.BMP	54109	116.76 KB	20/08/03 11:05
ICE_SOLU.JPG	54168	297.87 KB	08/09/03 10:58
LOGOA1.GIF	54932	21.67 KB	26/09/03 13:10
LOGOA2.GIF	54943	5.46 KB	26/09/03 12:00
LOGOB1.GIF	54946	19.86 KB	26/09/03 13:10
LOGO_TJS.JPG	54833	196.04 KB	15/08/03 15:20
LOGO_VIT.JPG	54317	1.01 MB	07/08/03 14:51
MFEC_BA2.SWF	55032	23.78 KB	08/10/03 10:59
MFEC_BAN.FLA	54956	130.50 KB	03/10/03 17:58
MFEC_BAN.HTM	55022	1.48 KB	03/10/03 17:52
MFEC_BAN.SWF	55023	16.46 KB	06/10/03 09:11
MFEC_PLC.GIF	55044	18.85 KB	07/08/03 17:56
MS.BMP	55054	34.01 KB	25/08/03 16:52
MSLOGO.JPG	55072	2.92 KB	25/08/03 16:52
MUSTANG_.GIF	55074	13.31 KB	25/08/03 16:52
NEW_CISC.JPG	55081	176.26 KB	07/08/03 14:51
SCC_LOGO.GIF	55170	11.15 KB	07/08/03 17:56
SEMLOGO.GIF	55176	21.12 KB	02/08/03 15:25

Audio CD/DVDs

The screenshot shows the dti RetroBurner software interface. At the top left is the dti RetroBurner logo with the website dtidata.com. The top right contains three icons: a wrench and screwdriver, a question mark, and a red stop sign. Below the logo is a drive selection dropdown menu showing "[1, 0]?: DVD-ROM SD-R2212 (TOSHIBA)". To the right of the dropdown are four navigation icons: a magnifying glass, a refresh arrow, a square, and an upward arrow. The main area is split into two panes. The left pane shows a tree view of the CD-ROM drive with tracks 1 through 9, where Track 3 is selected. The right pane is a table with columns for Filename, Sector, Size, and Modify, listing tracks 01 through 09 with their respective sector numbers and sizes.

Filename	Sector	Size	Modify
Track01	0	44.89 MB	
Track02	20012	53.25 MB	
Track03	43753	73.51 MB	
Track04	76526	26.03 MB	
Track05	88129	26.22 MB	
Track06	99820	50.35 MB	
Track07	122267	38.40 MB	
Track08	139388	57.82 MB	
Track09	165164	57.85 MB	

Selecting Drive

To select the drive you want DTI RetroBurner to analyse, use the drop down list located at the top left hand side of the window as shown below:

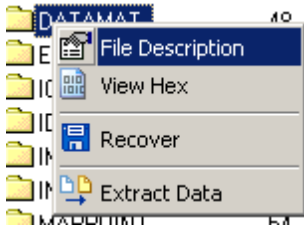


Your CD/DVD may have been created using different formats. RetroBurner automatically detects the format of your drive and adjusts itself accordingly.

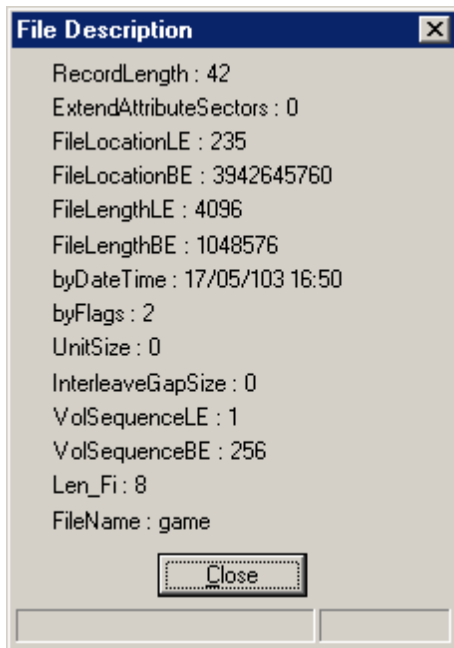
File Description

File description describes the properties of the selected file.

To access the file properties Right click the file name in the file list as and select the "File Description" option.



Details such as FileName, Creation Date, Record Length and File Size. This information may help you determine if the selected file is one you wish to recover.

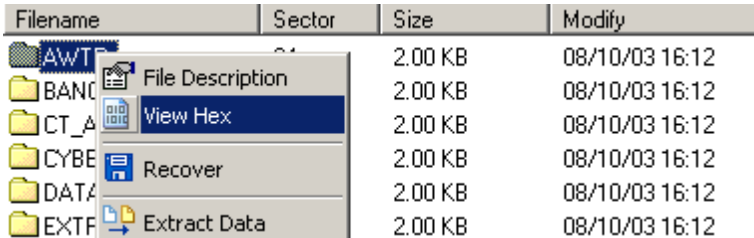


View Hex (Hexadecimal)

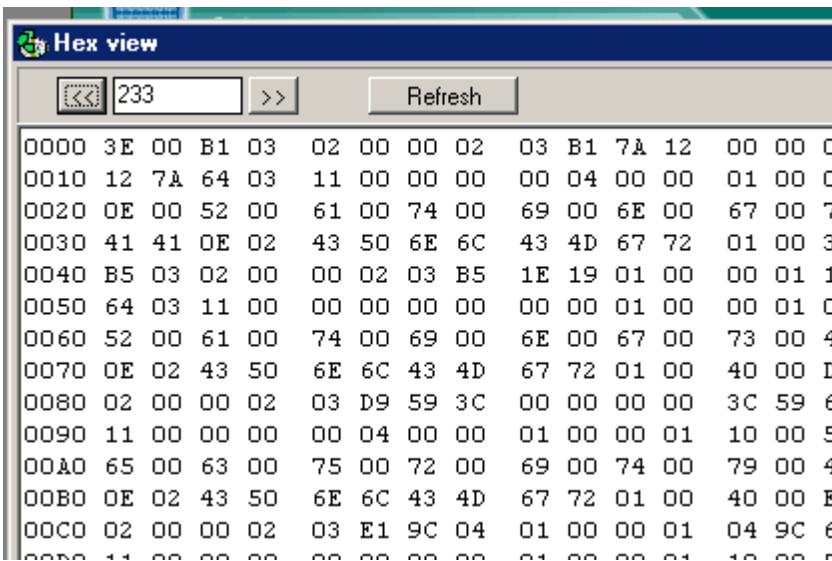
Not all files can be displayed as text. The View Hex option can safely display the contents of your selected file in a format that represents the binary values as hexadecimal format.

To access the Hexadecimal Viewer Right click the file name in the file list as and select the "View Hex" option.

Filename	Sector	Size	Modify
AWT	01	2.00 KB	08/10/03 16:12
BANC	02	2.00 KB	08/10/03 16:12
CT_A	03	2.00 KB	08/10/03 16:12
CYBE	04	2.00 KB	08/10/03 16:12
DATA	05	2.00 KB	08/10/03 16:12
EXTF	06	2.00 KB	08/10/03 16:12



Technical users may find this feature useful in seeing "inside" the files of your CD/DVD. If you are not a technical user, you need not worry that you need this feature in order to recover your data.



Address	Hex Data
0000	3E 00 B1 03 02 00 00 02 03 B1 7A 12 00 00 0
0010	12 7A 64 03 11 00 00 00 00 04 00 00 01 00 0
0020	0E 00 52 00 61 00 74 00 69 00 6E 00 67 00 7
0030	41 41 0E 02 43 50 6E 6C 43 4D 67 72 01 00 3
0040	B5 03 02 00 00 02 03 B5 1E 19 01 00 00 01 1
0050	64 03 11 00 00 00 00 00 00 00 01 00 00 01 0
0060	52 00 61 00 74 00 69 00 6E 00 67 00 73 00 4
0070	0E 02 43 50 6E 6C 43 4D 67 72 01 00 40 00 D
0080	02 00 00 02 03 D9 59 3C 00 00 00 00 3C 59 6
0090	11 00 00 00 00 04 00 00 01 00 00 01 10 00 5
00A0	65 00 63 00 75 00 72 00 69 00 74 00 79 00 4
00B0	0E 02 43 50 6E 6C 43 4D 67 72 01 00 40 00 E
00C0	02 00 00 02 03 E1 9C 04 01 00 00 01 04 9C 6
00D0	11 00 00 00 00 00 00 00 01 00 00 01 10 00 5

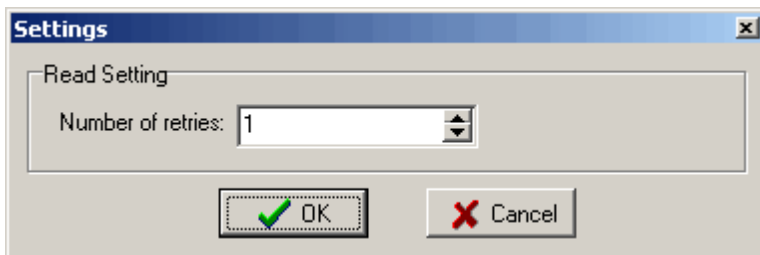
Settings

You can set the default ISO Mode and number of read retries before giving up.

To set the default program settings:



1. Select the **Settings** button, the Settings dialog box appears as follows:



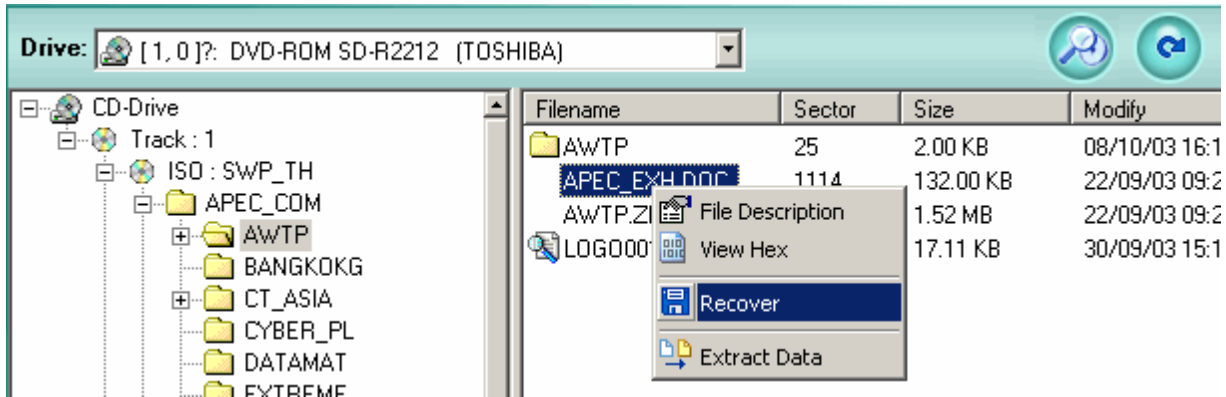
2. You can set the Read Retries

Number of Retries: Increase this number if you want to increase the recovery rate on damaged media. Due to the nature of some media types multiple tries can succeed where a single attempt failed.

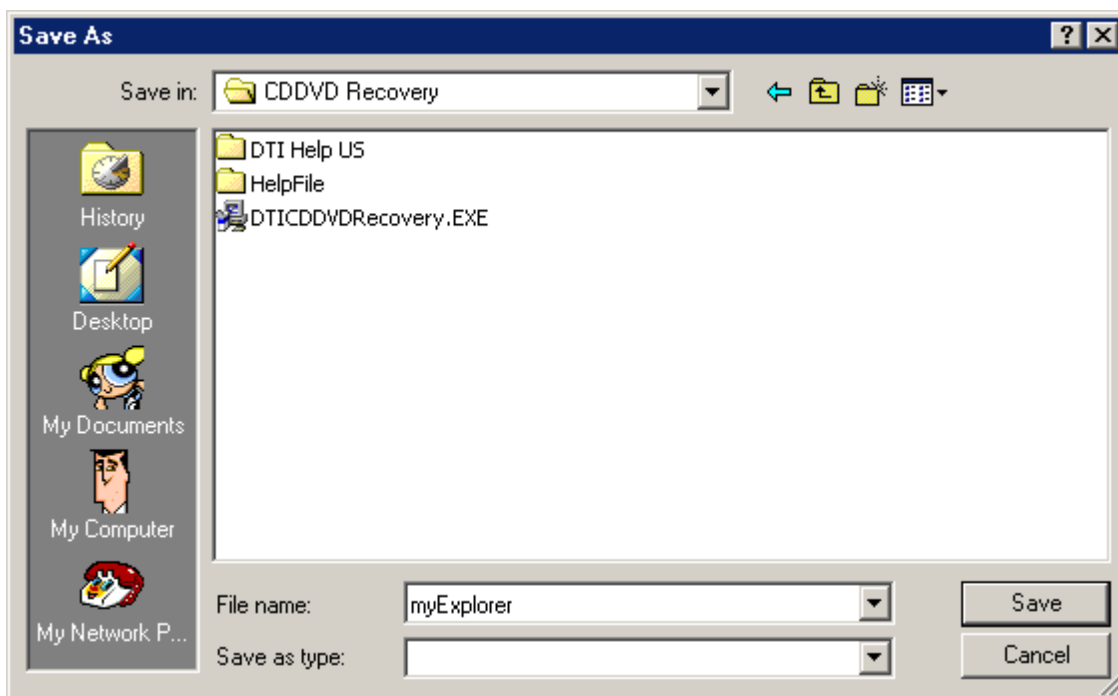
Recover File

To recover a file from your CD locate the file in the file list then right click it.

Select the "Recover" option from the pop up menu.



Select the location on your hard drive that you want to save the recovered file to.



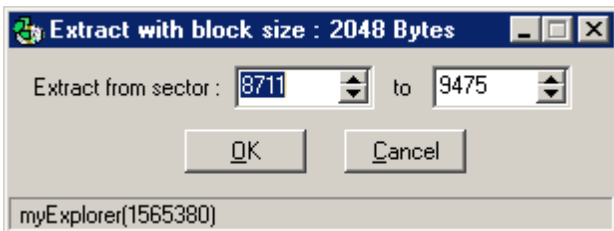
Extract Data

Advanced users can use this feature to recover portions of files. This function will extract data in the only the range that you specify.

This is helpful method for you to recover only the part of your data file if parts of the file contains valuable information that you need to save and the [file recover](#) cannot recover the entire file.

To access the Data Extractor Right click the file name in the file list as and select the "Extract Data" option.

Note: It is usually better to recover entire files if possible. This is because many files such as MS Office documents, image files and many others contain "header" information that is required by the programs that read these documents. If you recover only a portion of the file you may not be able open it with your normal programs.



CD Scan

Sometimes your CD can be badly damaged and the files structures are no longer available. You still may be able to recover loast files using RetoBurner's Scan CD function. This function will examine your CD by looking at the data area without the asisstance of the file information.

If possible you should use a [file recovery](#) because it is much faster and will be sure to receover the entire file.

When using the scan, be patient as every byte of information on your CD will be read in sequence so it can take a while.

To access the scan, click the Scan button on the main tool bar after selecting your CD Drive.

The Scan button is show highlighted in **red** below.



Frequently Asked Questions

Why kind of drives are supported?

If you use the drives that are conform MMC/SFF 8020i (revision 2.6), recovery should work well.

Does this program support MultiSession CDs?

Sure!! All MultiSession CD/DVDs are supported. You can see the file system display and you can retrieve those file. Each session contains its own copy of the file system.